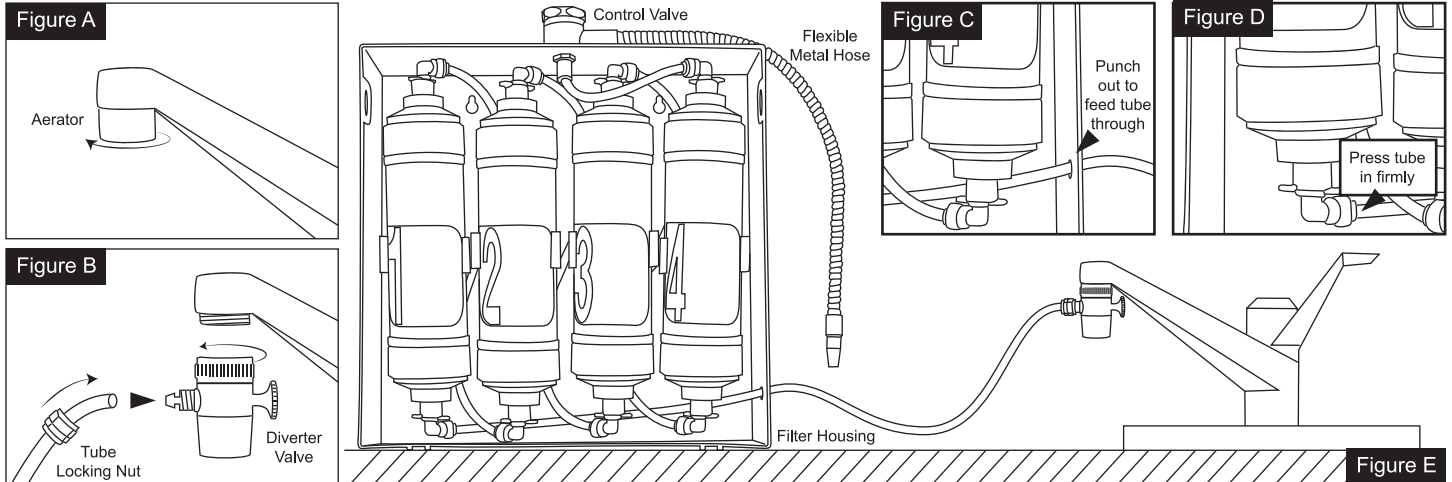


# PCCS COUNTER TOP INSTALLATION & FILTER CHANGE

Boxes contain: 1 filter housing with lid, 4 filters (1 ea. of 1, 2, 3, & 4) pre-installed into filter housing, 1 flexible metal hose, 1 faucet diverter valve with tube locking nut, and a length of ¼" white plastic tubing.

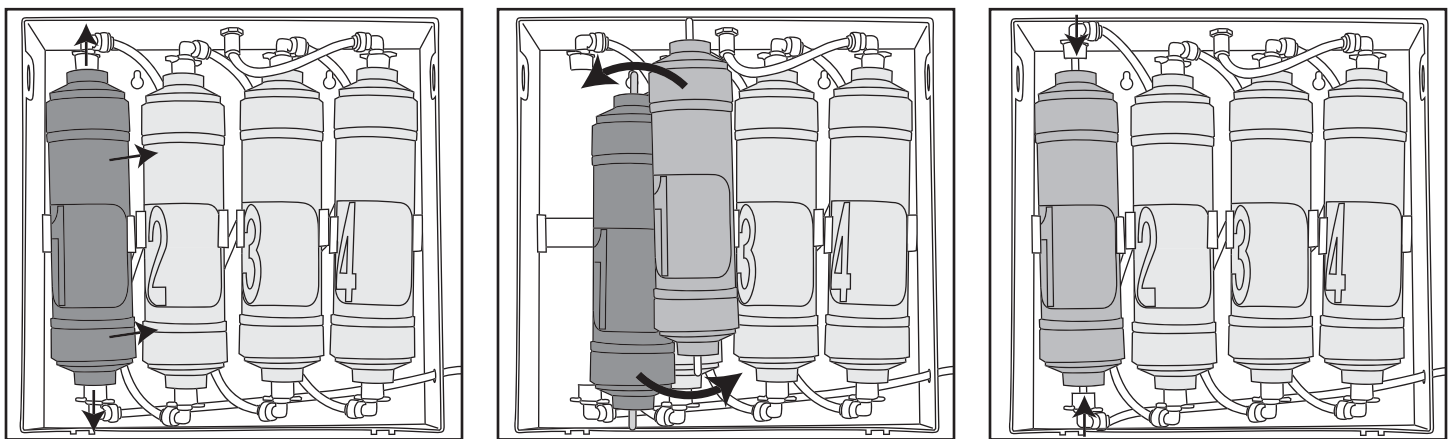


1. Unscrew the faucet aerator. Standard faucet aerators simply unscrew (Figure A). A wrench may be needed to loosen the aerator if it cannot be done by hand.
2. Fasten the diverter onto the faucet in place of the aerator (Figure B). Slide the tube locking nut onto one end of tubing. Press tubing onto diverter valve as far as it will go and secure it by sliding the tube locking nut onto the diverter valve and screwing the locking nut on as tightly as possible.
3. Punch out one of the outlets on the housing (left or right side, according to preference). Pull tubing attached to faucet through and securely press into the bottom compression coupling of the "1" filter. (Figure C & D)
4. The circuit is now complete. Test all connections in the set up. Retighten connections if necessary.
5. Turn the control valve on the PCCS to the "ON" position (ALWAYS leave open to avoid pressure build up). Turn on

your faucet (do NOT exceed a ¼" stream and never use hot water—excessive pressure or heat prevents proper filtration). Turn the diverter valve and carefully examine the set up for any leaks. Adjust if necessary.

6. The first time you run water you will notice a delay as the filters fill up. When water comes out it will be black and flushing carbon that loosened during shipping for a few minutes. Let water flow for 3-5 minutes. When the water clears up the filter will be ready for use.

**If desired, another filter may be added to the PCCS system for extra filtration.** Simply run tubing from the top of the "4" filter and through a mounting hole on the back to an additional filter. Run another length of tubing from the other end of the additional filter, through the other mounting hole on the back of the PCCS, and attach the end to the control valve connection.



**Changing Your PCCS Filters:** It is recommended that your filters are changed as outlined on each individual label. Please keep in mind that water quality and usage have an effect on filter life. People who use more water and/or have poor water quality will need to replace their filters more frequently than suggested.

1. Pull the filter needing replacement out of the bracket holding it to the PCCS.
2. Grasping the blue or red coupling caps of the filter, pull strongly away from the filter body. Repeat with the other end of the filter.
3. Attach the coupling caps firmly to the replacement filter, making sure that the filter is right side up, then push the filter into the holding bracket.
4. Repeat as necessary for the number of filters needing replacement.
5. Turn the diverter valve and carefully examine the set up for any leaks. Adjust if necessary. Allow for a delay as the filters fill up. When water comes out it will be black and flushing carbon that loosened during shipping for a few minutes. Let water flow for 3-5 minutes. When the water clears up the filter will be ready for use.