

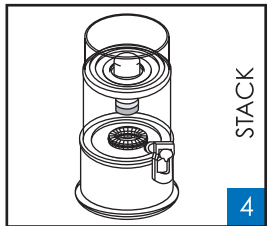
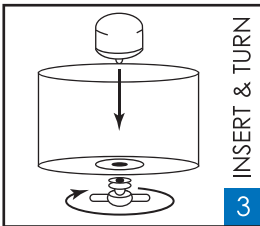
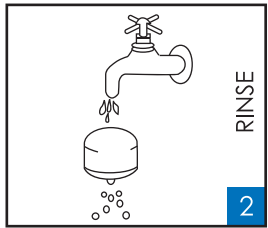
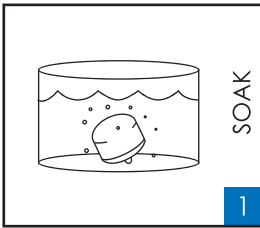


## DT PRODUCT GUIDE

# PURE-ALKA CERAMIC FILTER

### ABOUT

An ultra accurate 0.2 $\mu$  pore filter that removes rust, sediment, dirt, & other solids.



### ASSEMBLY IN PURE-ALKA SYSTEM

1. Soak the ceramic filter in water for 3 minutes.
2. Thoroughly rinse the filter under running water.
3. Insert the filter into the bottom of the upper water tank with the rubber backing on the outer surface and fasten the nut.
4. Place the upper tank on the lower tank.

### MAINTENANCE

As you use your PURE-ALKA System, you will notice surface discoloration—most likely, dark brown from rust. Simply wipe off the surface staining with a clean sponge or rough cloth to remove particulate buildup. Change your filter every 6 to 12 months depending on use.

Dream Tree Family, Inc.

Tel: 1-888-618-5950 • Fax: 713-988-8839

E-mail: [support@DreamTreeFamily.com](mailto:support@DreamTreeFamily.com)